

Installation Manual

BMW 5 SERIES ESTATE
BMW-5SER-E-D



Shades



Side Shades



Port Shades



Tailgate Shades

Fixing Clips



CL-M03 x 4



CL-M02 x 8



CL-P02 x 2



CL-M12 x 2



CL-M14 x 1



CL-W01 x 1

CAR
SHADES

Installation

BMW 5 SERIES ESTATE
BMW-5SER-E-D

Components Needed



Side Shades



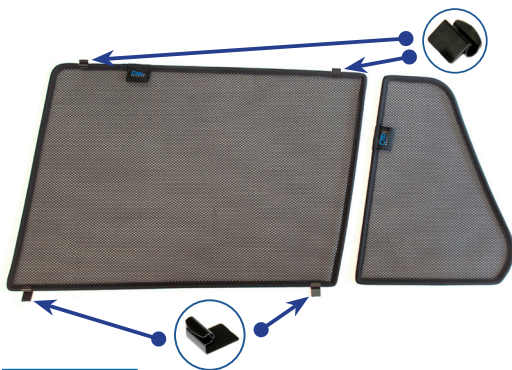
CL-M03 x 4



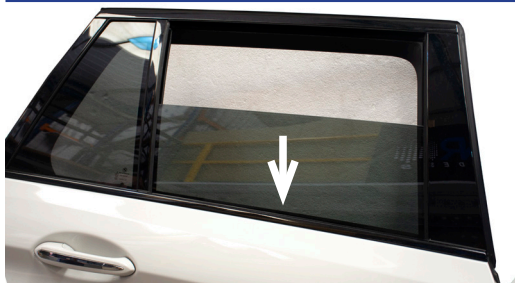
CL-M02 x 2

Side Shade Installation

STEP 1

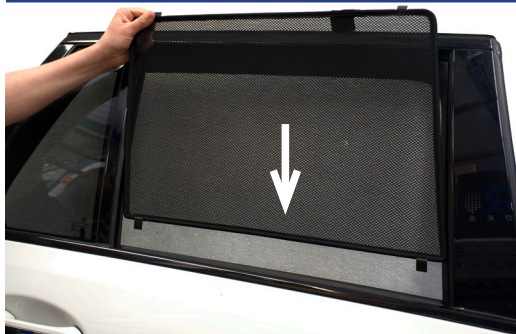


STEP 2



Window must be down and shade fitted from the outside

STEP 3



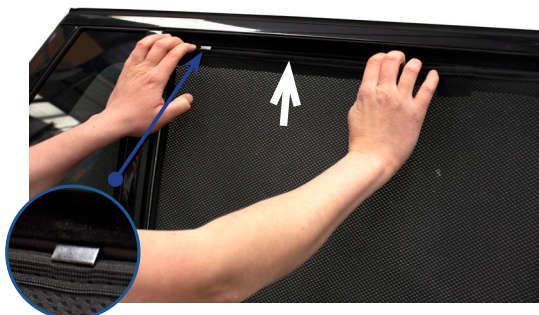
STEP 4



STEP 5



STEP 6



Installation

BMW 5 SERIES ESTATE
BMW-5SER-E-D



Side Shade Installation

STEP 7



STEP 8



STEP 9



Wiggle the shade slightly side to side while sliding forward

STEP 10



STEP 11



STEP 12



Repeat this whole process for the other side.

Installation

BMW 5 SERIES ESTATE
BMW-5SER-E-D

Components Needed



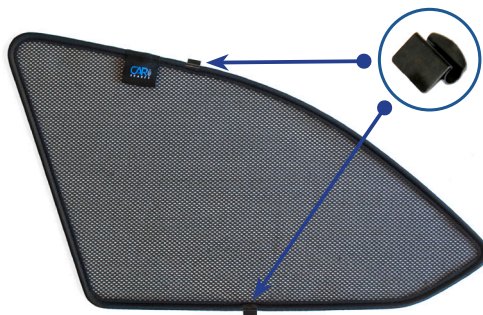
Port Shades



CL-M02 x 4

Port Shade Installation

STEP 1



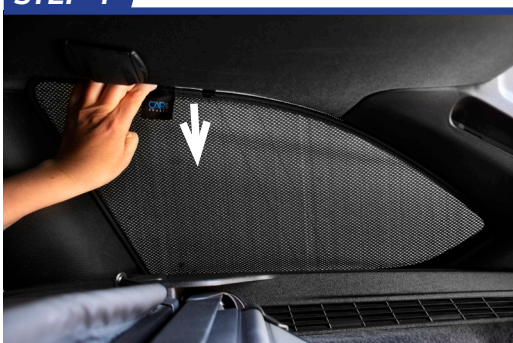
STEP 2



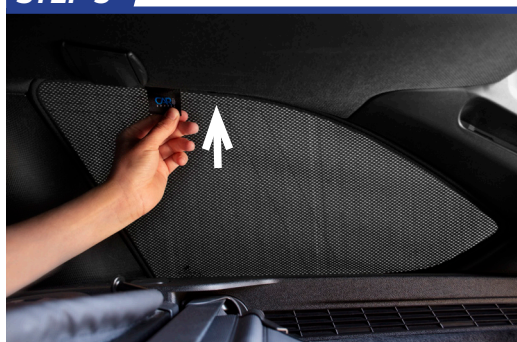
STEP 3



STEP 4



STEP 5



STEP 6



Repeat this whole process for the other side.

Installation

BMW 5 SERIES ESTATE
BMW-5SER-E-D

Components Needed



Tailgate Shades



CL-P02 x 2



CL-W01 x 1



CL-M14 x 1



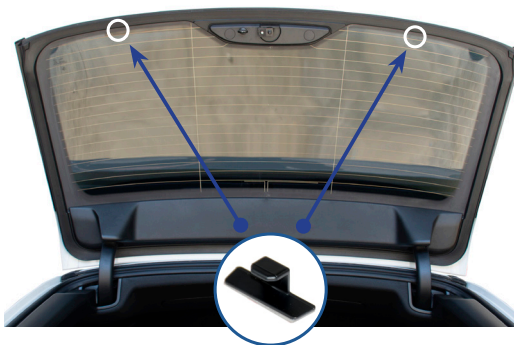
CL-M12 x 2

Tailgate Shade Installation

STEP 1



STEP 2



STEP 3



STEP 4



Press and hold clips in place for 30 Seconds

STEP 5



Repeat steps 3 & 4 for the second P02 clip

STEP 6



Installation

BMW 5 SERIES ESTATE
BMW-5SER-E-D

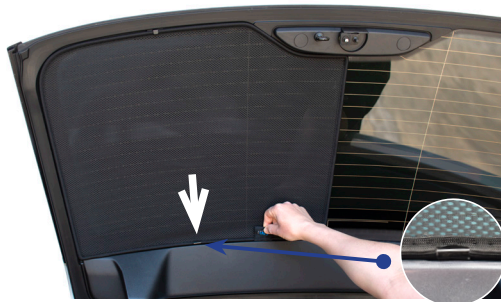


Tailgate Shade Installation

STEP 7

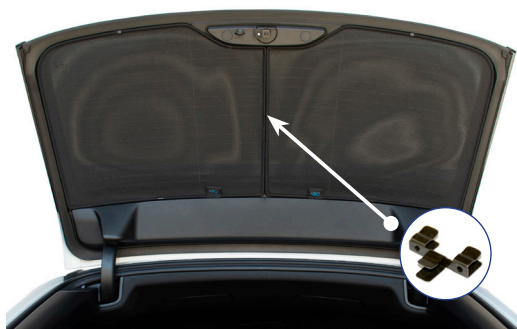


STEP 8

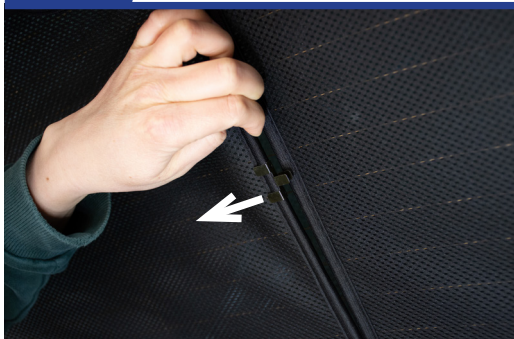


Repeat this whole process for the other side.

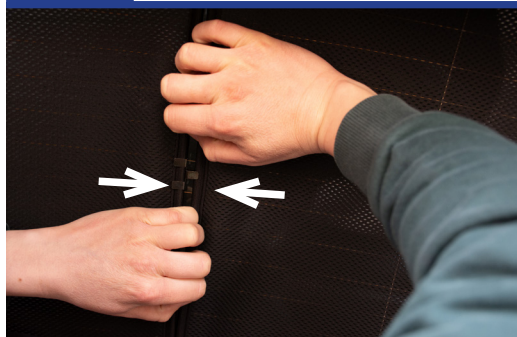
STEP 9



STEP 10



STEP 11



STEP 12

